

ROCKIN' ROLLER²

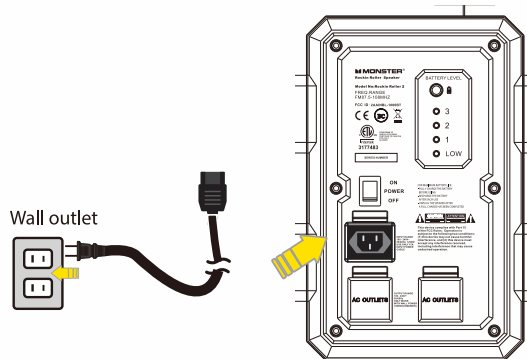
PORTABLE INDOOR / OUTDOOR WIRELESS SPEAKER

Quick Start Guide

For complete operational guidelines, please refer to your user manual.

Basic Set up

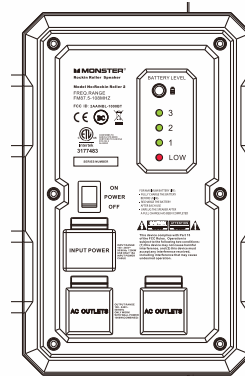
1 Connect the AC Power



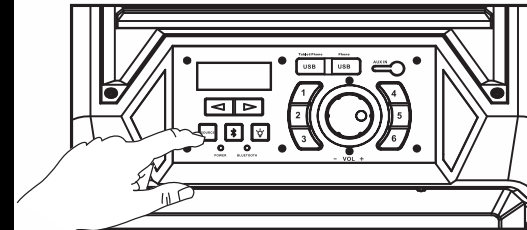
- Connect the included AC Cable to the speaker
- Plug cord into a wall outlet.
- Charge battery for approximately 6 hours before you start using the unit for the first time.

2 Charging the built-in batteries on the Rockin' Roller

- By connecting the AC power, the battery will begin to charge.
- If **Red LED** indicator is flashing, this means that battery levels are low and need charging.
- If **all Green LED** indicator is on, this means the battery level is full
- Charge battery about 6 hours before you start using the unit for the first time.



3 FM / USB Charging on the Rockin' Roller



A. Listening to FM radio

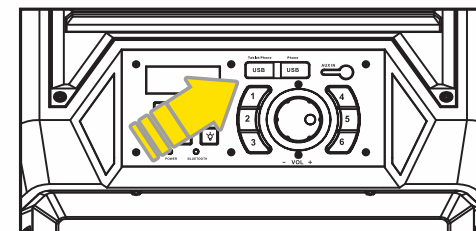
- Press the "Source" button to select FM source, the radio station frequency is displayed on screen.
- Press and hold (◀ or ▶) to search a station with strong reception automatically.

B. Store your favorite six radio stations manually

- Tune to a radio station.
- Press and hold a number key (1-6) to enter programming mode; the corresponding number blinks on the screen; and the station to save the corresponding number.
- Repeat above step 1-2 to store more favorite station.

C. Select a favorite radio station

- Press "Source" button to select FM source.
- Press number 1-6 key to select one of your favorite radio station to listen.
- To save as a preset press and hold the number until a confirmation is displayed on the screen.



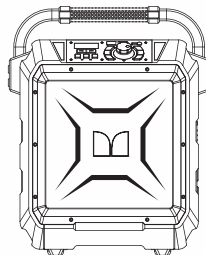
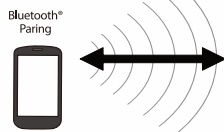
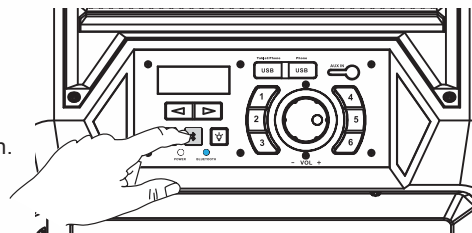
D. USB Charging mobile device

- The Monster Rockin' Roller has a built in USB battery bank. In order to use this feature you must use your mobile device's USB cable (iPhone or Android) and connect it to the USB port on the Rockin' Roller.

Bluetooth® Connection

4 Manual Bluetooth Pairing

- Place the speaker and your Bluetooth device so they are no more than 3 feet apart.
- Press the source button until "BT" Mode is displayed on screen.
- Press and hold Bluetooth button on Speaker for 2 seconds to enter into Bluetooth pairing mode. BT Blue LED will flash.
- Make sure Bluetooth function on your Bluetooth device is ON.



- Set your Bluetooth device to search for Bluetooth devices. You will recognize the unit by its Bluetooth name Monster Rockin' Roller
- Bluetooth LED turns solid once a Bluetooth device has been paired.

Bluetooth Blue LED Indicator
(Flashing to **Steady On**)